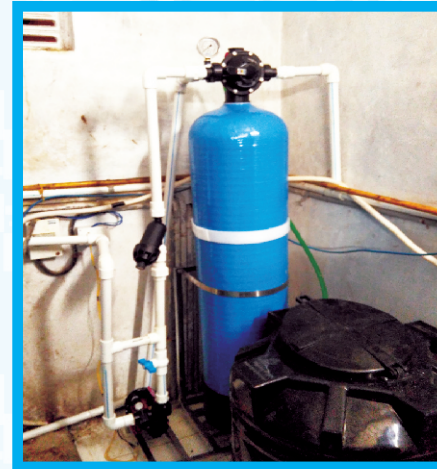


**AN ISO 9001 : 2008 CERTIFIED COMPANY**

*Healthy Home & Lifestyle Begins With Purity .....*



Our Associate Partners



Corporate Office

**Aquaveeta Water Engineering Pvt. Ltd**

Plot No. A1/2, MIDC - D1 Block, Nr. Kamalnayan Bajaj School, Behind Surbhi Hotel ,  
Chinchwad - Pune - Maharashtra - 411019.

Email : [info@aquaveetawater.com](mailto:info@aquaveetawater.com) / [aquaveetawater@gmail.com](mailto:aquaveetawater@gmail.com)

Contact : +91 98987 29769, 80877 16126

TM



# Aquaveeta

AN ISO 9001: 2008 CERTIFIED COMPANY

[www.aquaveetawater.com](http://www.aquaveetawater.com)



## COMPANY HISTORY

AQUAVEETA WATER ENGINEERING PVT. LTD. takes this opportunity to introduce our selves as one of the leading Organization in India engaged with Water Treatment Technologies since 1998. AQUAVEETA WATER ENGINEERING PVT LTD is well known Company having so many satisfied Customers over INDIA.

that is why we say "A satisfied customer can promote products more effectively than any other sales promotional activity."

AQUAVEETA WATER ENGINEERING PVT LTD offers standard models for RO system running from 250 LPH To 10000 LPH suitable for Domestic , Commercial and light Industrial applications. We also offer many options to achieve excellence and satisfaction in softening plants, hydro pneumatic booster Systems and high efficiency pumps with best concept of energy of savings.



### AQUAVEETA WATER ENGINEERING PVT. LTD is engaged with following products:

- # Water Treatment Plants
- # FRP & Stainless Steel R. O. Plants
- # Turnkey Project / Bottling Plant
- # Pressure Booster System
- # UPVC Cartridge Filter Housing
- # All Type of Pressure Pumps
- # All Type of FRP Tanks
- # Butterfly Valves & Ball Valves
- # STP / ETP Plants
- # Water Softeners & Chemicals

### All Type Of Industrial Water Treatment Plant, Chemicals & Spares Suppliers



Cartridge Filter Housings



Cartridge Filter



FRP & Composite Vessels



Rotameters



## FEATURES

- Cast Iron / Stainless Steel Body
- Stainless Steel Shaft
- AISI 304 SS Impellor
- All Pumps are with various protection class
- Antirust Protection & Copper Winding
- Easy installation & Maintainance

## NUMEROUS MEMBERS, ONE FAMILY, ECO FRIENDLY PUMP

Based on market segment, LEO's pump business is devided into 5 fields, namely Water Consewancy & Water Resources, Power Station, Petrochemical Industry, Mining & Metallurgical Industry & Civilian Applications. For each field there's a professional manufacturing base with relevant professional sales team. Four subsidiary companies -Wuxi LEO Xi Pump, Changsha LEO Swan Pump, Dalian LEO Huaneng Pump and Human Leo Pump are well known industrial pump manufacturers in their own fields. with over 70 year's industrial pump manufacturing experience and extraordinary comprehensive strength, LEO becomes a leading company among all industrial pump manufacturers in China.

ITALY PATENT DESIGN

EUROPEAN STANDARD

CE CERTIFIED PRODUCT

